



ASKING PRICE

£875,000

Ide Hill, TN14 6JG

PROPERTY SUMMARY

Set in the heart of Idyllic Ide Hill, enjoying a position with panoramic views across the surrounding countryside and woodland, this spacious detached family home with three double bedrooms has fabulous potential to extend (the current owner is in the process of submitted plans) and is moments from the community shop and popular pub. The property benefits from a double garage, central heating, double glazing, a generous kitchen/diner, conservatory and a wrap around garden, of particular note is a generous South facing patio with simply stunning views and an ideal place to enjoy afternoon drinks .

3



2



2





LOCAL AUTHORITY

TENURE
Freehold

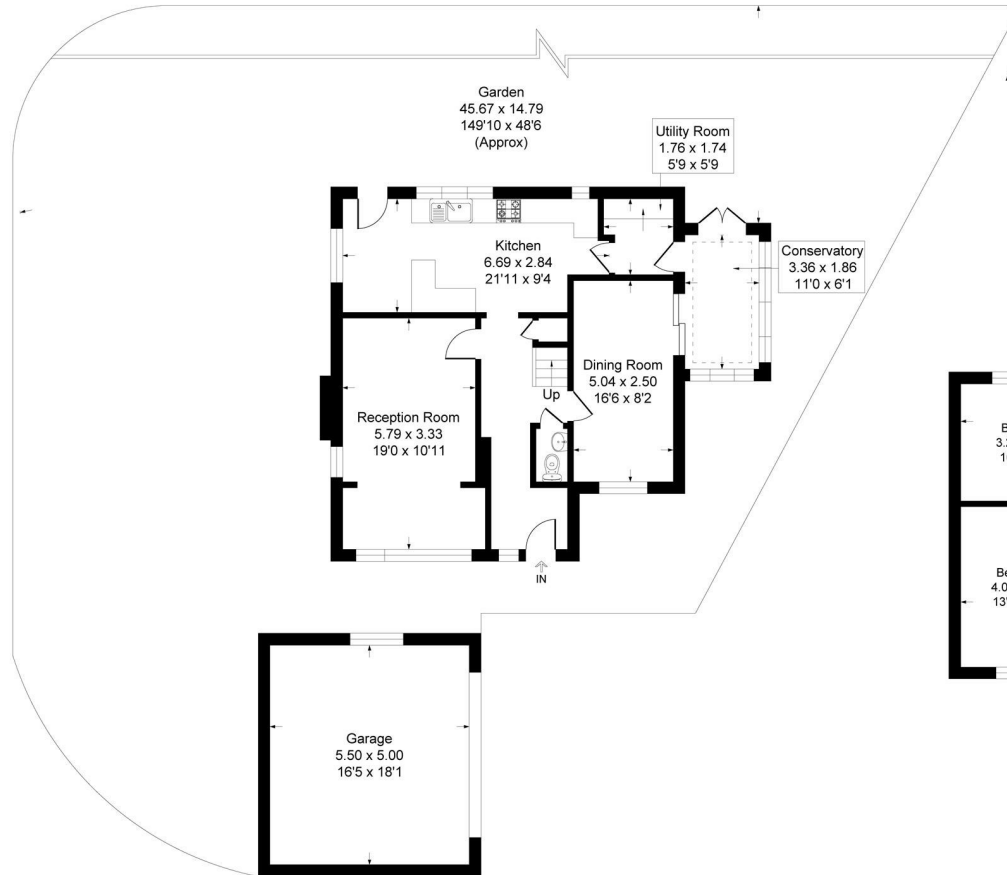
EPC RATING
E

COUNCIL TAX BAND
F

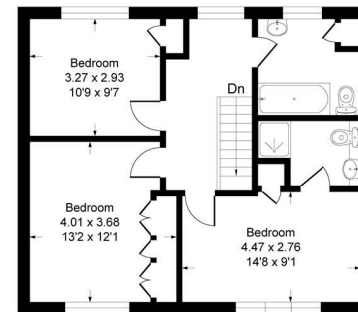
VIEWINGS
By prior appointment only

Woodlawn, TN14

Approximate Gross Internal Area
134.5 sq m / 1448 sq ft
Garage = 27.5 sq m / 296 sq ft
Total = 162.0 sq m / 1744 sq ft



Ground Floor



First Floor

Energy Efficiency Rating		
	Current	Potential
<i>Very energy efficient - lower running costs</i>		
(92 plus) A		
(81-91) B		
(69-80) C		77
(55-68) D		
(39-54) E	51	
(21-38) F		
(1-20) G		
<i>Not energy efficient - higher running costs</i>		
England & Wales	EU Directive 2002/91/EC	



This plan is for layout guidance only. Not drawn to scale unless stated. Windows and door openings are approximate. Whilst every care is taken in the preparation of this plan, please check all dimensions, shapes and compass bearings before making any decisions reliant upon them.
Produced By Planpix



Agents Note: Whilst every care has been taken to prepare these particulars, they are for guidance purposes only. All measurements are approximate and are for general guidance purposes only and whilst every care has been taken to ensure their accuracy, they should not be relied upon and potential buyers/tenants are advised to recheck the measurements



OFFICE ADDRESS

1&2 The Grange
Westerham
Kent
TN16 7AH

OFFICE DETAILS

01959 587 460
infowh@sinclairhammelton.co.uk